

1 SILVER PROJECT CC316 W/ 24V BATTERYLESS ALTERNATOR AND 12V EXCITATION / MAIN INFORMATION

Projeto Silver CC316 com alternador dedicado 24V e excitação em 12V / Informações Gerais

MAIN CONNECTORS

B8M1 NEGATIVE POWER TERMINAL
 B10M1 POSITIVE POWER TERMINAL
 CCTL CONNECTOR DASHBOARD SC2000
 CDS CONNECTOR DUCT SENSOR
 CES CONNECTOR EXTERNAL SENSOR
 CEH CONNECTOR ENABLE HETING
 CFA CONNECTOR FRESH AIR
 CIS CONNECTOR ICE SENSOR
 CRS CONNECTOR ROOM SENSOR
 CWD CONNECTOR WINDSHIELD
 CWV CONNECTOR WATER VALVE
 ICA INTERFACE COMPRESSOR ALTERNATOR
 IC1 INTERFACE CONNECTOR 1 - ROOFTOP UNIT
 IC2 INTERFACE CONNECTOR 2 - ROOFTOP UNIT
 IC3 INTERFACE CONNECTOR 3 - ROOFTOP UNIT
 IC4 INTERFACE CONNECTOR 4 - DEFROSTER
 IVS INTERFACE VEHICLE SIGNALS
 X100 SU021 - CAN CONNECTOR
 X101 SU021 - N.C.
 X200 SU021 - POWER SUPPLY CONNECTOR
 X300 SU021
 X301 SU021
 X400 SU021

MAIN DEFINITIONS

AIR CURTAIN
 CLUTCH SIGNAL
 VEHICLE D+
 D+
 GND
 VBAT

OUTPUT SIGNAL ACTIVATED WITH GND WHEN EVAPORATORS BLOWERS ARE RUNNING (MÁX. 400mA)
 OUTPUT SIGNAL ACTIVATED WITH VBAT WHEN THE COMPRESSOR CLUTCH IS ENGAGED (MÁX. 500mA)
 FOR THE CONTROLLER MONITOR WHEN ENGINE IS RUNNING
 MANDATORY SIGNAL TO ENABLE THE CLIMATIZATION SYSTEM, WHEN THE ENGINE IS RUNNING AND FOR ADDITIONAL ALTERNATOR EXCITATION
 NEGATIVE OR GROUND WITH 0V
 POSITIVE WITH 24VDC

RELAY BOARD AND DEFROSTER RELAYS

RB1 - SBF260 24V - 06 BLOWERS - W/ RE-HEAT UNIT
 RB2 - SBF264 24V - 06 BLOWERS AND 03 FANS - COOLING UNIT

 RL1 - RELAY BLOWER LOW SPEED
 RL2 - RELAY BLOWER MEDIUM SPEED 1
 RL3 - RELAY BLOWER MEDIUM SPEED 2
 RL4 - RELAY BLOWER HIGH SPEED

SENSORS AND VALVES

DS1 - ROOFTOP DUCT SENSOR
 ES1 - ROOFTOP EXTERNAL SENSOR
 ICE1 - ROOFTOP NTC ICE SENSOR
 ICE2 - DEFROSTER NTC ICE SENSOR
 PS1 - ROOFTOP PRESSURE SENSOR
 RS1 - ROOFTOP ROOM SENSOR
 RS2 - DEFROSTER ROOM SENSOR

 EV1 - EXPANSION VALVE
 EV2 - PUMP DOWN VALVE
 WV1 - ROOFTOP WATER VALVE

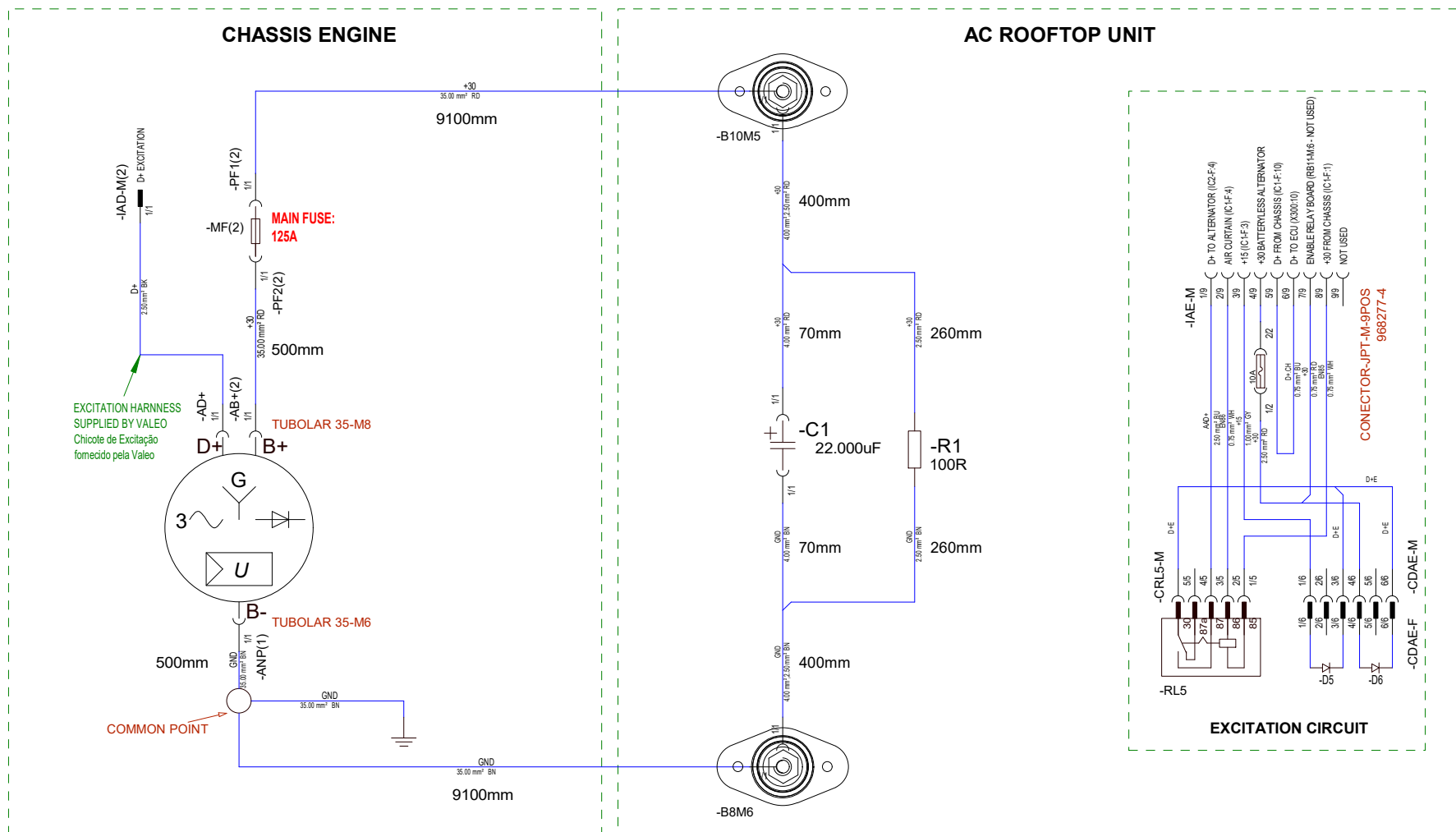
Rev. Index	Qty	Rev. No.	Date	Draw	Change Description	Description	Date	Name	Initial Release:	2248-2		
						SILVER PROJECT CC316	16/01/2023	RPEDRONI	Part No.:	036-00338-000	Page Size:	A3
						Projeto Silver CC316	16/01/2023	DJANUARIO	Valeo		Unit:	CC316
							16/01/2023	FKATZ			Page:	1
											of	10

2 ELECTRICAL POWER CONNECTIONS - BATTERYLESS ALTERNATOR

Conexões Elétricas de Potência - Alternador Dedicado

ELECTRICAL POWER CONNECTIONS SPECIFICATIONS AND CONSIDERATIONS ACCORDING 036-00302-000.

Especificações e Considerações da Conexão Elétrica de Potência conforme 036-00302-000.

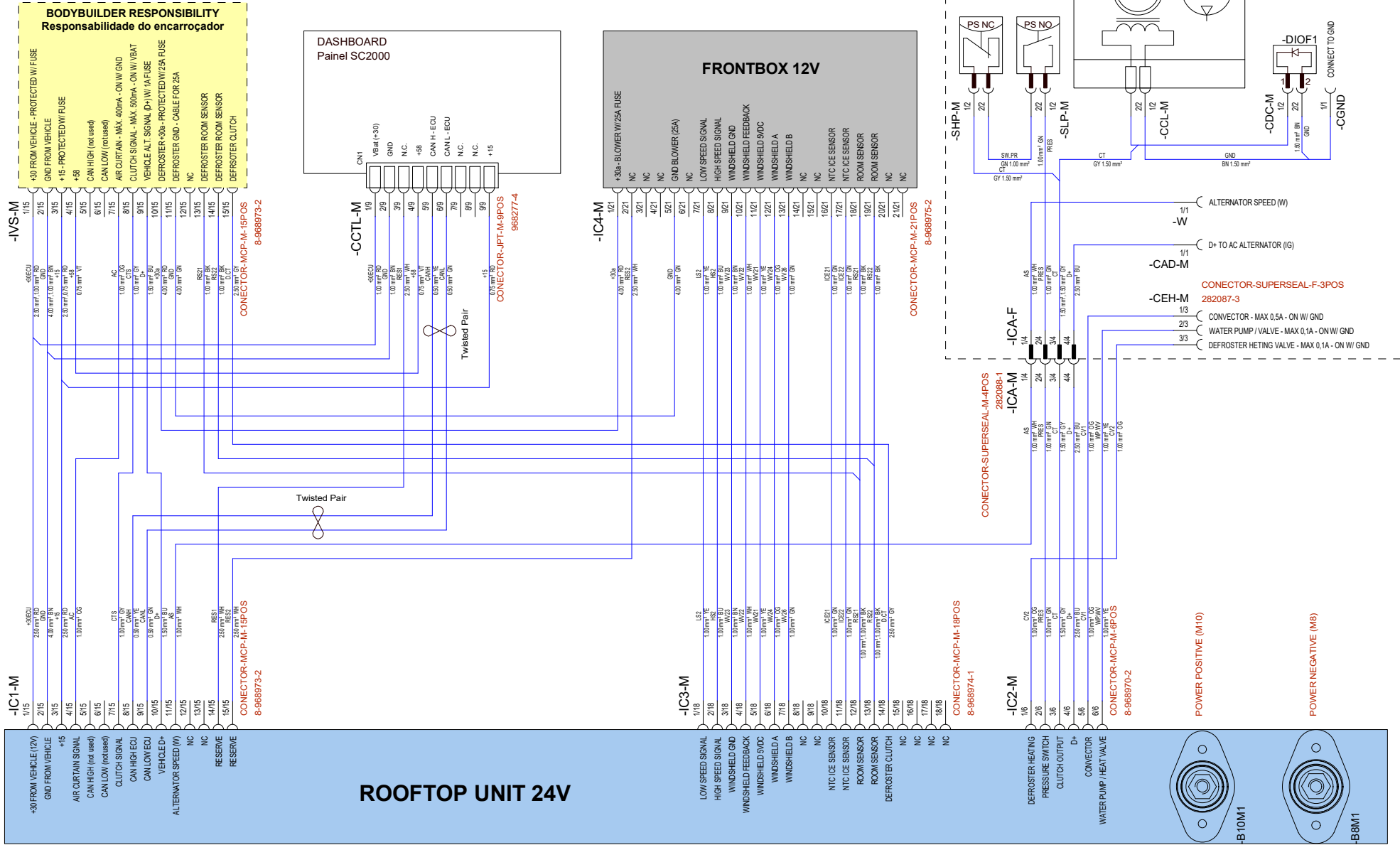


NOTES ALTERNATOR OUTPUT POWER CABLES: FOR INDICATED GAUGE THE MAX LENGTH IS 15 M. FOR LONGER CABLES GAUGE MUST BE INCREASED.
GND CABLE BETWEEN ADDITIONAL ALTERNATOR AND VEHICLE SYSTEM: MUST USE AT LEAST THE SAME GAUGE OF THE ADDITIONAL ALTERNATOR OUTPUT CABLE

Notas Cabos de saída de potência do alternador: para bitola indicada o comprimento máximo é de 15m. Comprimentos maiores é necessário aumentar a bitola.
Conexão GND entre o alternador adicional e o sistema do veículo: usar no mínimo a mesma bitola do GND de saída do alternador adicional.

Rev. Index	Qty	Rev. No.	Date	Draw	Change Description	Description	Date	Name	Initial Release:	2248-2
						SILVER PROJECT CC316	16/01/2023		Part No.:	036-00338-000
						Projeto Silver CC316	16/01/2023		Page Size:	A3
							16/01/2023		Voltage:	24V / 12V
									Unit:	Page: 2
										of 10

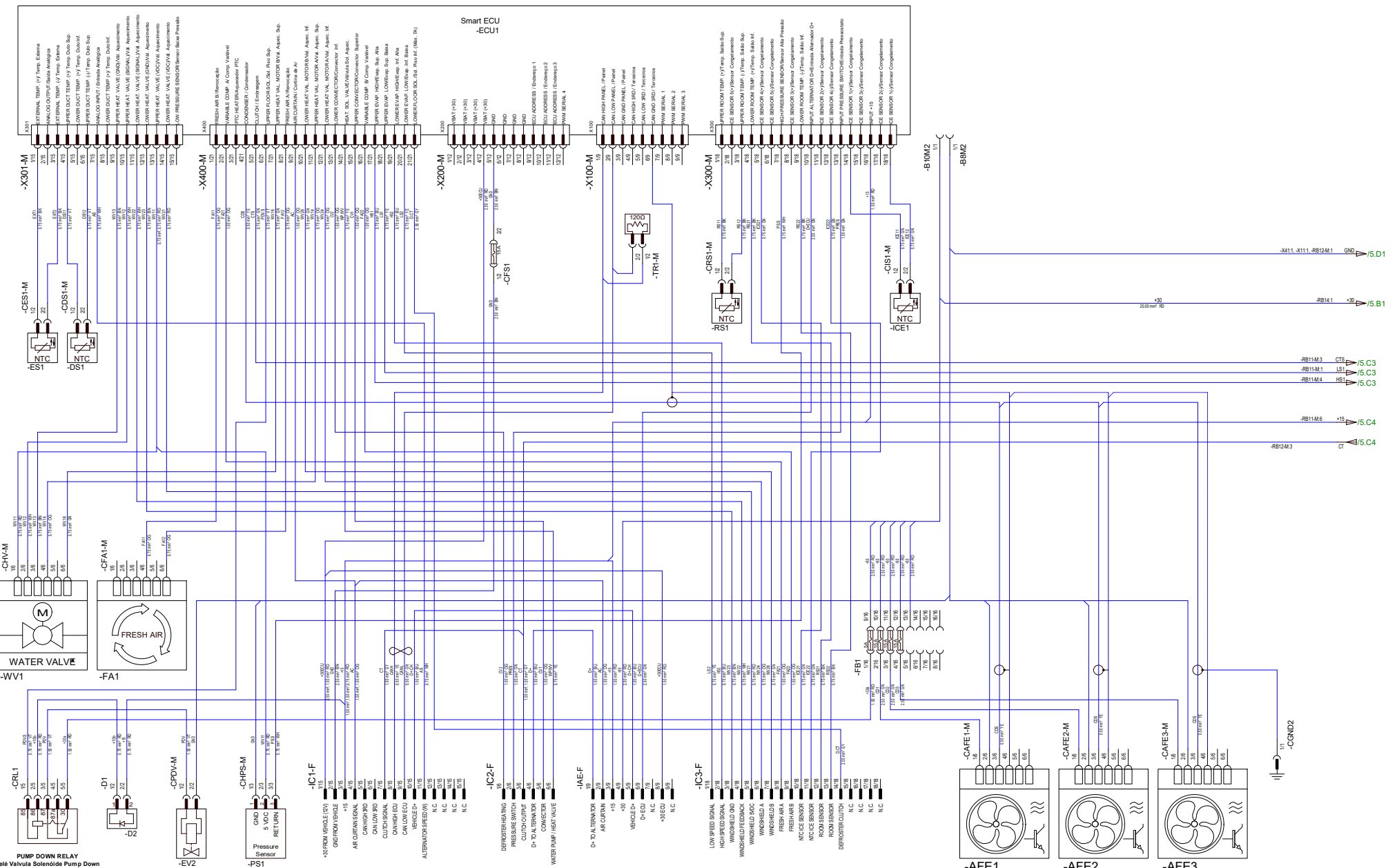
3 SILVER PROJECT / INTERFACE WIRING HARNESS / SC2000 DASHBOARD
Projeto Silver / Chicote de Interface / Painel SC2000



Rev. Index	Qty	Rev. No.	Date	Draw	Change Description	Description	Date	Name	Initial Release:	2248-2
						SILVER PROJECT	16/01/2023	RPEDRONI	Part No.:	036-00338-000
						CC316 / CC215 / FRONTBOX	16/01/2023	DJANUARIO	Page Size:	A3
							16/01/2023	FKATZ	Unit:	CC316 / CC215
									Page:	3
									of	10

SILVER PROJECT CC316 / EVAPORATOR ELECTRICAL DIAGRAM / ECU SU021

Projeto Silver CC316 / Diagrama Elétrico do Evaporador / ECU SU021

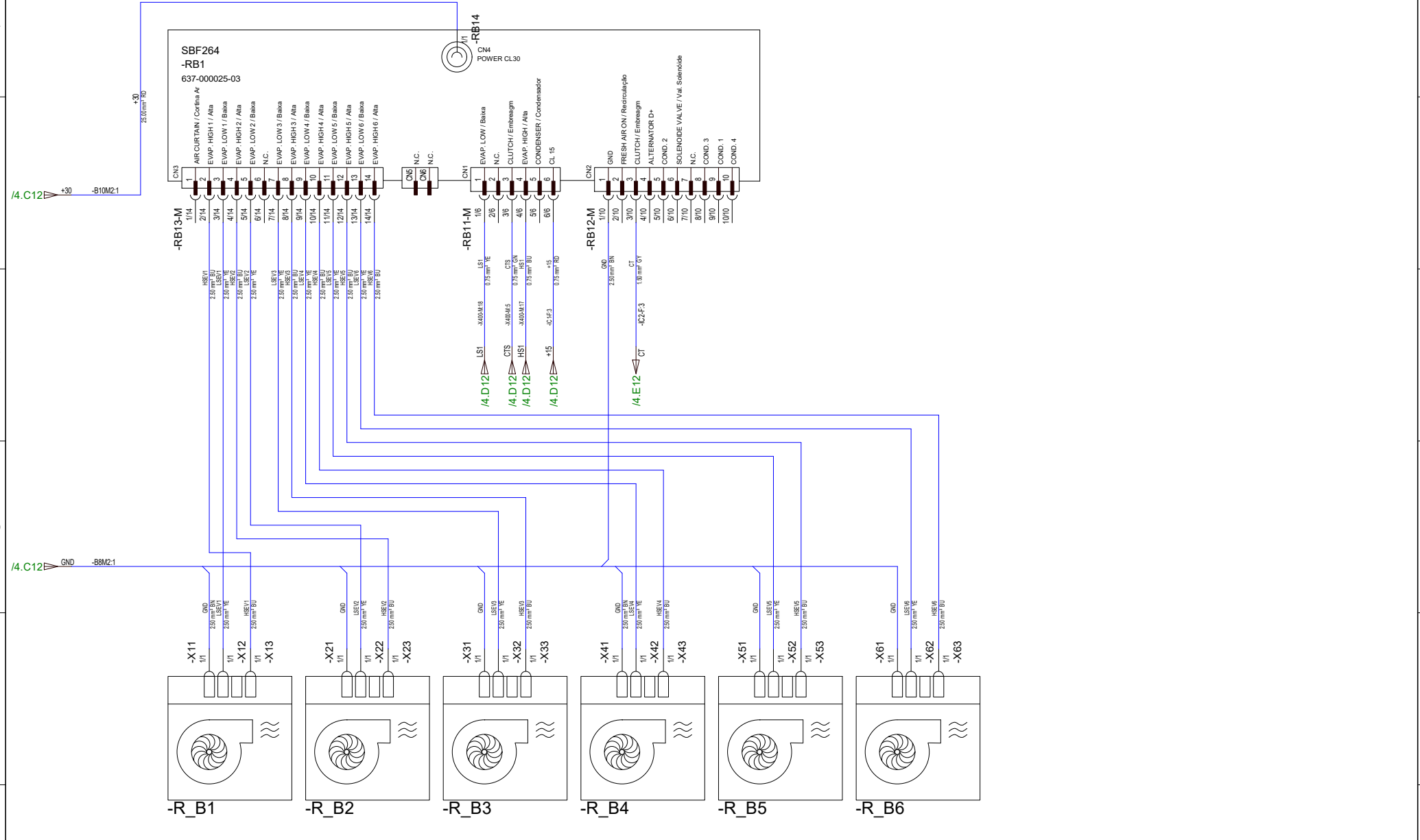


Rev Index	Qty	Rev. No.	Date	Draw	Change Description	Description

SILVER PROJECT CC316 Projeto Silver CC316		Date: 16/01/2023 Name: RPEDRONI Part No.: 036-00338-000 Voltage: 24V / 12V	Initial Release: 2248-2 Page Size: A2 Page: 4 of 10
DRAW: 16/01/2023 CHECK: DJANUARIO APPROVE: 16/01/2023 FKATZ	Unit: CC316	Valeo	Next Page: 5

5 SILVER PROJECT CC316 / EVAPORATOR ELECTRICAL DIAGRAM / RELAY BOARD

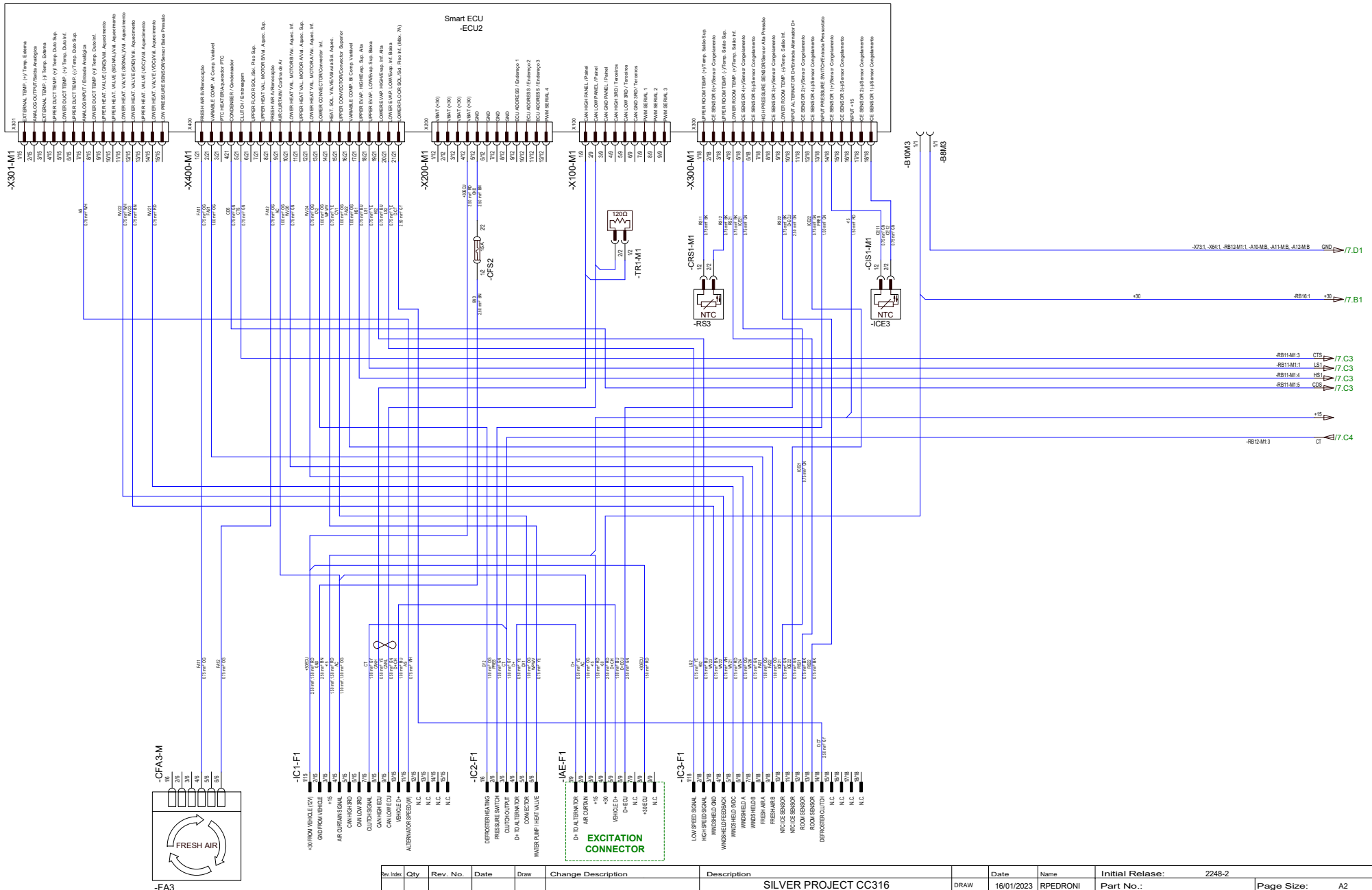
Projeto Silver CC316 / Diagrama Elétrico do Evaporador / Placas de Relé



Rev. Index	Qty	Rev. No.	Date	Draw	Change Description	Description	Date	Name	Initial Release:	2248-2	
						SILVER PROJECT CC316	DRAW	16/01/2023	RPEDRONI	Part No.:	036-00338-000
						Projeto Silver CC316	CHECK	16/01/2023	DJANUARIO	Page Size:	A3
							APPROVE	16/01/2023	FKATZ	Voltage:	24V / 12V
										Unit:	CC316
										Page:	5
										of	10

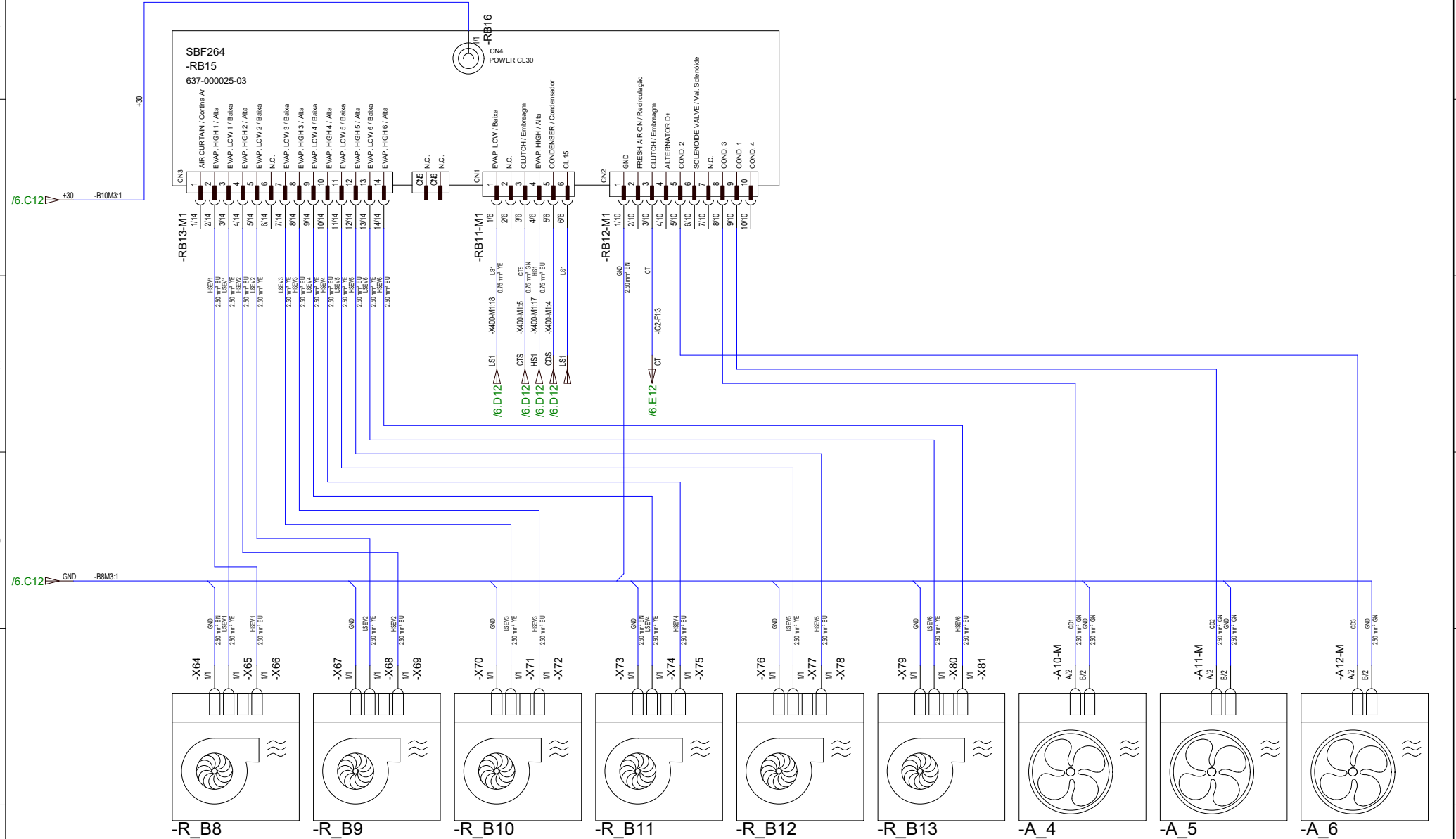
SILVER PROJECT CC316 / EVAPORATOR ELECTRICAL DIAGRAM / ECU SU021

Projeto Silver CC316 / Diagrama Elétrico do Evaporador / ECU SU021



7 SILVER PROJECT CC316 / EVAPORATOR ELECTRICAL DIAGRAM / RELAY BOARD

Projeto Silver CC316 / Diagrama Elétrico do Evaporador / Placas de Relé

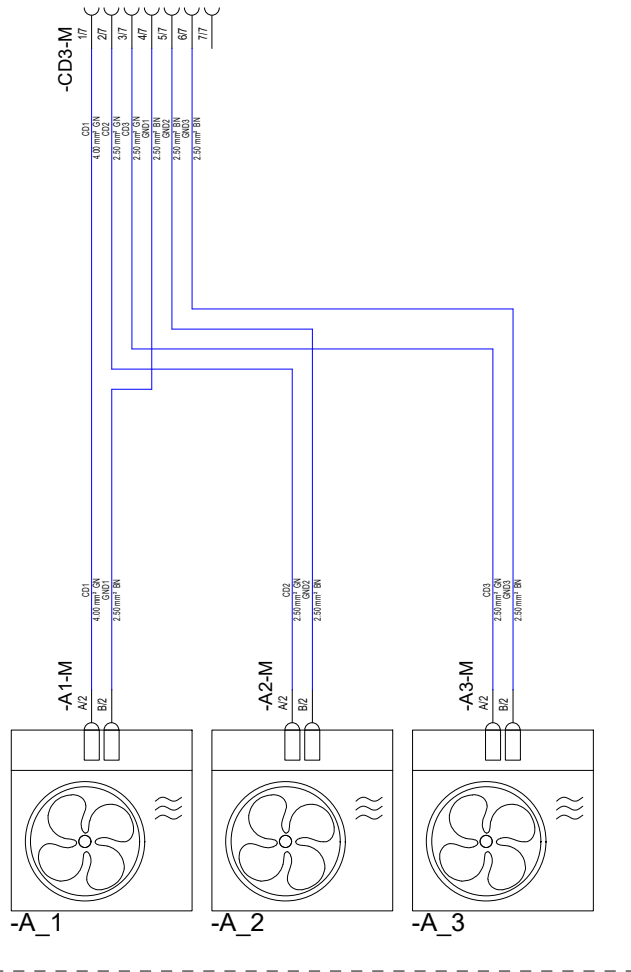


Rev. Index	Qty	Rev. No.	Date	Draw	Change Description	Description	Date	Name	Initial Release:	2248-2		
						SILVER PROJECT CC316	16/01/2023	RPEDRONI	Part No.:	036-00338-000	Page Size:	A3
						Projeto Silver CC316	16/01/2023	DJANUARIO	Unit:	CC316	Voltage:	24V / 12V
							16/01/2023	FKATZ			Page:	7
											of	10

8 SILVER PROJECT CC316 / CONDENSER ELECTRICAL DIAGRAM

Projeto Silver CC316 / Diagrama Elétrico do Condensador

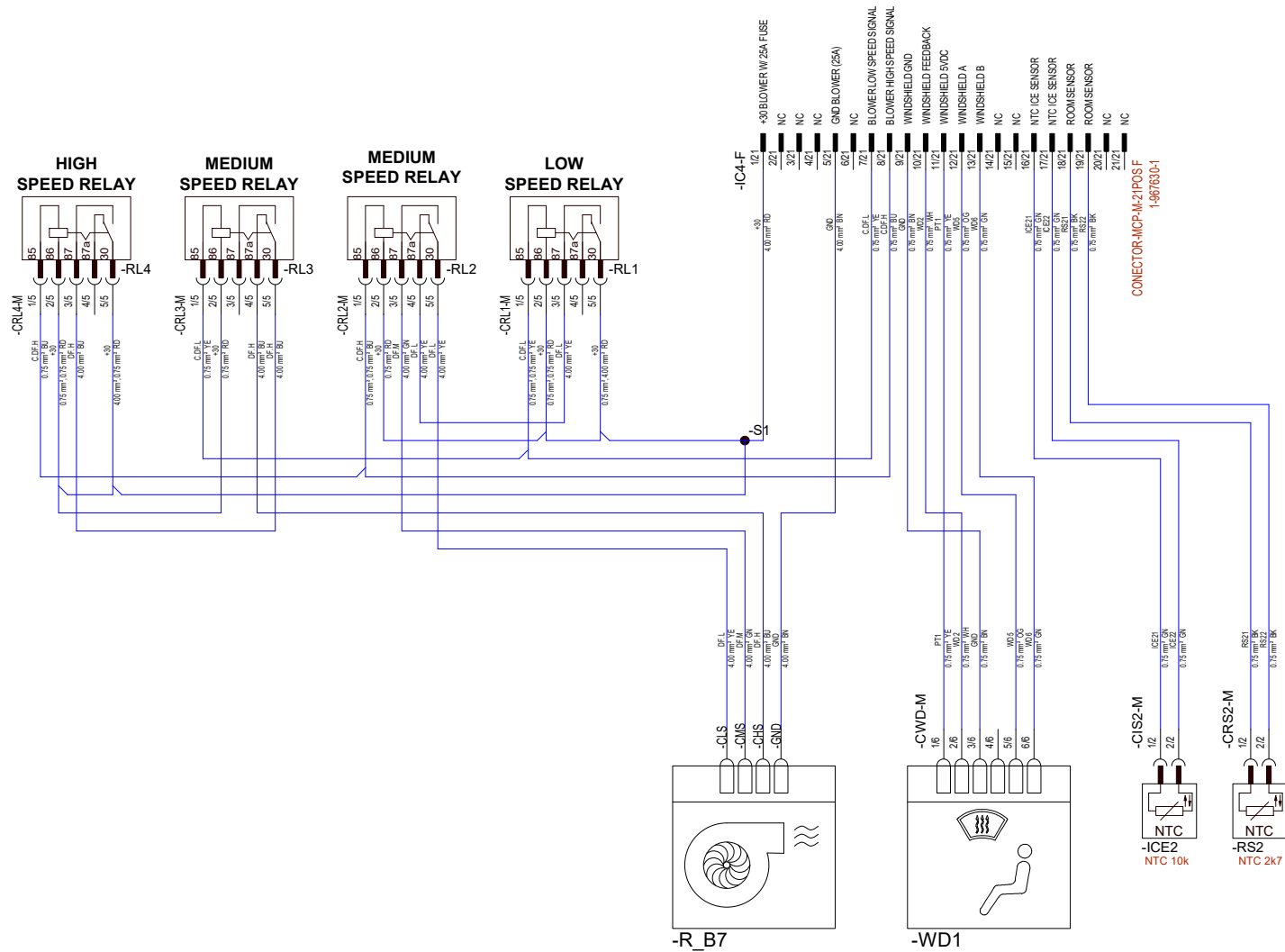
CONDENSER WITH BRUSH FAN Condensador com Ventilador com Escova



Rev. Index	Qty	Rev. No.	Date	Draw	Change Description	Description	Date	Name	Initial Release:	2248-2
						SILVER PROJECT CC316	DRAW	16/01/2023	RPEDRONI	Part No.: 036-00338-000
						Projeto Silver CC316	CHECK	16/01/2023	DJANUARIO	Page Size: A3
							APPROVE	16/01/2023	FKATZ	Voltage: 24V / 12V
										Unit: CC316
										Page: 8
										of 10

9 SILVER PROJECT / DEFROSTER ELECTRICAL DIAGRAM

Projeto Silver / Diagrama Elétrico do Defroster




Rev. Index	Qty	Rev. No.	Date	Draw	Change Description	Description	Date	Name	Initial Release:	2248-2			
						PROJETO SILVER	DRAW	16/01/2023	DJANUARIO	Part No.:	036-00338-000	Page Size:	A3
						Defroster	CHECK	16/01/2023	RPEDRONI	Unit:	Defroster	Voltage:	24V / 12V
							APPROVE	16/01/2023	FKATZ			Page:	9
												of	10

10 CHANGE HISTORY

Histórico de Modificações

REVIEW Revisão	NAME Nome	RELEASE DATE Data Liberação	RELEASE IDE	CHANGES HISTORY Histórico de Alterações	CHECKED BY Verificado por	APPROVED BY Aprovador por	ARE THERE CHANGES FOR BODY? Há alterações para carroceria?
0	RPEDRONI	10/2020	2248-2	INITIAL RELEASE / Revisão Inicial	DJANUARIO	FKATZ	NO / Não
A	DJANUARIO RPEDRONI	06/2021	2248-9	Foi alterada a tensão do projeto de 12V para 24V Foram criadas as versões de diagrama para chicotes únicos (evap. + cond.) Foram criadas as versões de condensador com ventilador eletrônico com Re-heat PG 2 - RES1 WAS IVS-M:15; WIRE C.DF WAS CEVT AND WAS IC4-M:20. PG6 - RELAY COIL WAS +15; REMOVED CEV.	DJANUARIO	FKATZ	YES / Sim
B	DJANUARIO RPEDRONI	06/2021	2248-13	PG6. IC4-F:12 ao 15 era WV24, WV26, FA21. Alteradas Bitolas e distribuição de cabos nos relés. PG6 IC4-F:12 TO 15 WAS WV24, WV26, FA21. CHANGE WIRE GAUGES AND DISTRIBUTION ON RELAYS. Inclusão do sinal W para leitura da rotação do alternador	DJANUARIO	FKATZ	YES / Sim
C	RPEDRONI	11/2021		Atualização diagrama do Defroster de acordo com o chicote 670-120001-00 Atualização do diagrama elétrico de interface devido a alteração no chicote do Defroster	RCOMIN	FKATZ	YES / Sim
D	RPEDRONI	01/2022		Alteração da pinagem do sensor ICE do Defroster. Retirado dos pinos X300-M:11 / X300-M:17 (ICE 2) PARA X300-M:5 / X300-M:12 (ICE 4)	RCOMIN	FKATZ	NO / Não

Rev. Index	Qty	Rev. No.	Date	Draw	Change Description	Description	Date	Name	Initial Release:	2248-2		
						SILVER PROJECT CC316	16/01/2023	RPEDRONI	Part No.:	036-00338-000	Page Size:	A3
						Projeto Silver CC316	16/01/2023	DJANUARIO			Voltage:	24V / 12V
							16/01/2023	FKATZ		Unit:	CC316	Page: 10 of 10